

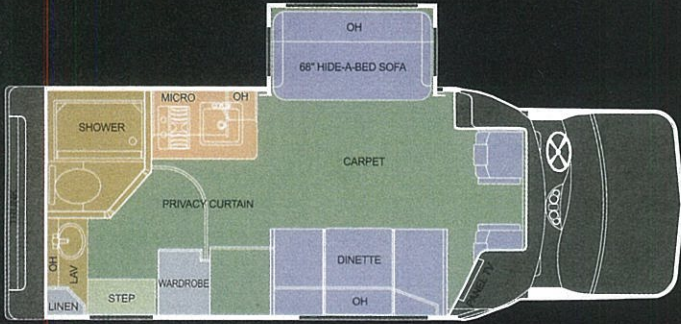
isata

TOURING SEDAN
E-SERIES

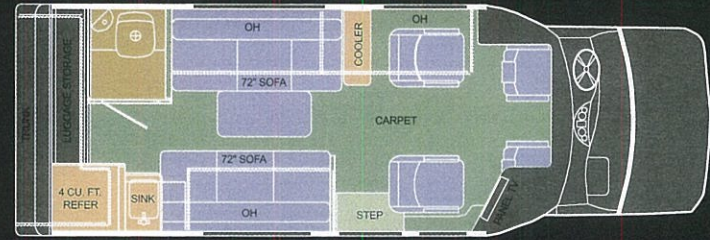


Floor Plans

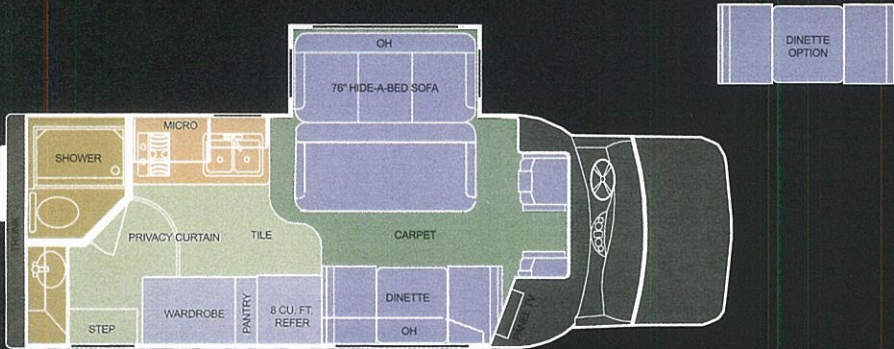
Whichever floor plan you choose, you can be sure it's been thoughtfully designed to provide a beautiful, comfortable, convenient living experience — just like home.



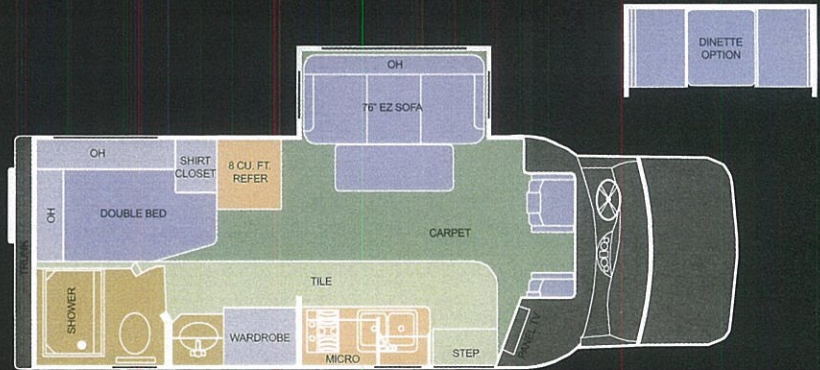
IE230



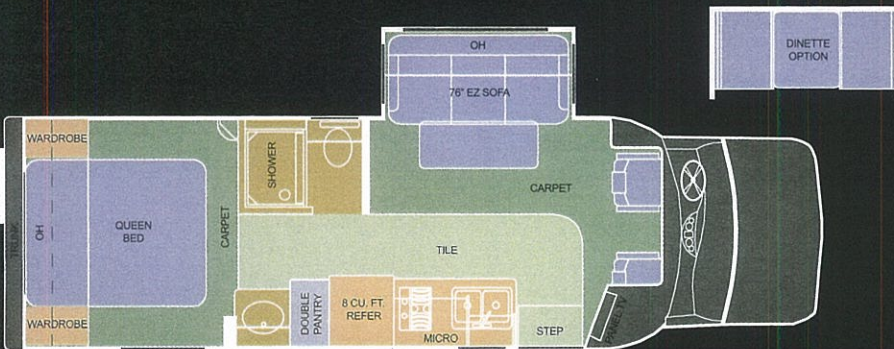
IE235



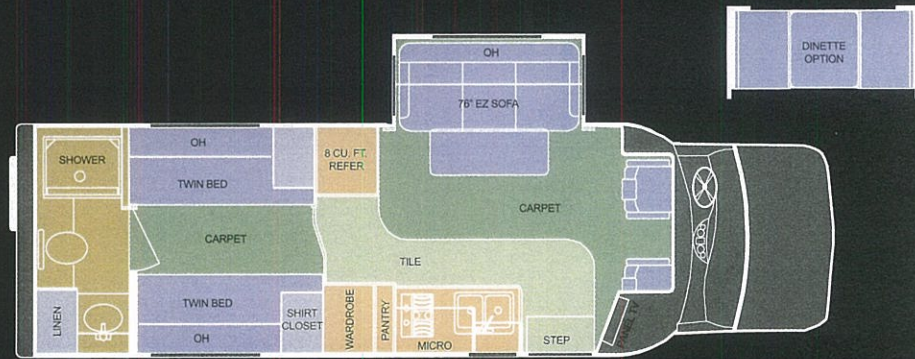
IE250



IE254



IE280



IE282



IE250 Cherry, Tan decor, shown with optional fabric dinette



IE250, Natural Maple, Stoney Ridge decor,
Kitchen shown with optional stainless-steel refrigerator



Dynamax now offers a cab-over option on the ISATA 23- and 25-foot floor plans, providing an additional bed over the driving area.

The greatest luxury is getting there.

The newly designed ISATA Touring Sedan gives you everything you need in a motorhome — power, luxury, reliability and something that other large motorhomes don't — amazing maneuverability. ISATA is a smaller, more nimble vehicle that can take you places that full-size motorhomes just can't come close to. You can get there ... anywhere ... in the ISATA Touring Sedan.



EXTERIOR FEATURES & CONSTRUCTION

Radiused, aerodynamic, fiberglass — laminated sidewalls and ceiling
 Molded-fiberglass rear-body cap
 R-8 insulation in sidewalls and ceiling
 R-11 insulation in floor
 Square-tube aluminum-framed sidewall
 Heavy-gauge square-tube steel floor trusses
 Seamless-fiberglass textured roof
 12-volt electric slideout with awning (IE250, IE254, IE280, IE282)
 Four semi-automatic leveling/stabilizing jacks (N/A IE235)
 Welded aluminum-frame boxes for all through-wall cutouts
 Outside, lockable, trunk and side storage compartments with sealed, seamless-molded fiberglass liner and steel reinforcing straps
 Sewer-hose storage compartment with locking door
 Locking doors for fuel and fresh-water fill
 Front, aluminum, billet grille
 Automatic, electric entry step
 Lighted-entry grab handle
 Premium-quality heavy-duty screen door
 Tire-valve extensions for rear wheels
 Exterior base coat/clear coat, four-color custom-ribbon paint and graphics
 Diamond Shield® paint protection on selected impact areas
 Rear mud flaps
 30-ft. land line for 110-volt/30-amp external power
 City water and gravity-fill hookups
 Outdoor shower/cleaning station
 Exterior porch and service lights
 A&E® box awning (optional IE235)
 Custom-molded front-bumper ground effects with running lights
 One-piece fiberglass sun visor
 Hydraulic jack and lug wrench
 Tow hitch (5,000 lb.) with wire harness
 Exclusive DynaRide™ air suspension system

DRIVING COMPARTMENT FEATURES

Steel safety cage surrounding transition from cab to coach
 Six-way power driver and passenger captain's chairs
 Premium "Soft Touch" upholstery for captain's chairs
 Power steering, brakes and windows
 Tilt steering column
 Power remote and heated mirrors

Rear-view mirror with outside temperatures and compass
 Cruise control
 Dash, automotive air conditioning
 Dash instrumentation: engine temperature, fuel level, odometer, trip odometer, speedometer, oil pressure, voltmeter
 Driver and passenger overhead, directional reading lamps
 Dash-mounted AM/FM/CD
 Tinted glass in windshield, side and rear windows
 Intermittent windshield wipers
 Power door locks (driver, passenger and entry door)
 Remote entry

LIVING SPACE FEATURES

23-in. flat-screen TV and Sony® DVD/CD player with Surroundsound®
 Cable TV and phone hookup
 Automotive door latch and deadbolt lock on entry door
 Premium-quality stain-resistant nylon-sculpted carpet on thick, 2-lb. pad
 Low-level aisle lighting with convenience switch at entry door
 Panoramic, bonded/tinted crank-out awning-style windows with screen (no sliders)
 Solid-oak cabinet fronts and raised-panel doors
 Corian® counter tops
 Choice of: Tan, Mink or Stoney Ridge (Grey) high-style interior-decor packages
 Designer-fabric window valances
 Mini blinds over kitchen window
 Soft, pleated, day/night shades on other windows
 Snap-in privacy drape for windshield
 Winegard® roof-mounted antenna with manual crank, 360-degree swivel and 12-volt signal booster
 Double Corian® sinks (single IE235)
 Single-handle pullout faucet/sprayer in kitchen sink
 Sink cover to provide additional counter work space in kitchen
 Dometic® 8.0-cubic-foot dual-power two-door refrigerator/freezer (4 cu./ft. IE235)
 Two-burner LP-gas range in black enamel (N/A IE235)
 Lighted power hood over range
 Convection/microwave oven
 Sofas: Flexsteel® EZ Bed (IE254, IE280, IE282) Flexsteel®
 Hide-A-Bed with air mattress (IE230/IE250), Lexington® jack knife (IE235)
 Seat belts for passengers on sofa
 Pedestal-mounted sofa table (except where dinette)

Deluxe fabric ceiling
 Numerous 12-volt incandescent lights
 Strategically placed 110-volt outlets
 Vanity-style porcelain basin with Delta® chrome single-lever faucet
 Porcelain toilet in bath (N/A IE235)
 One-piece fiberglass shower/surround with folding shower door
 Skydome in shower (N/A IE235)
 Mirrors over vanity and in bathdoor or closet door
 Water-pump switch in bath
 Emergency-exit window in rear of vehicle
 Safety Features: LPG leak detector, 12-volt carbon-monoxide detector, smoke detector, fire extinguisher

COMFORT CONTROL, ENVIRONMENTAL SYSTEMS

30,000-BTU Suburban® LP-gas furnace with ducted discharge
 Ceiling-ducted low-profile Duo-Therm® roof-mounted 13,500-BTU air conditioner
 Insulated air conditioning ducts
 Air conditioning vents with controls to redirect air flow and volume
 Fantastic® roof vents
 Comfort-control center with thermostat and switching for heating and air conditioning
 Full-function monitor panel tracks levels of fresh, grey, black water; battery status, LP level; includes switches for water heater, water pump, holding-tank heaters and exterior light
 Six-gal. Suburban® LP-gas water heater with direct-spark ignition
 4.0 Onan® gas generator
 Water-heater bypass valves
 Inside battery-cutoff switch for coach
 Power inverter — 1,000 watt

CHASSIS FEATURES

Ford® E450
 Ford® 6.8L Triton V-10 engine (415 CID, 305 HP, 420 ft./lbs. of torque @ 3250 RPM)
 Dual rear-drive wheels
 LT225/75R x 16E tires with full-size spare
 55-gallon fuel tank
 Four-speed automatic overdrive transmission
 Four-wheel ABS brakes: power front disc, rear disc
 Front stabilizer bar
 1.125" rear stabilizer bar
 Rear DynaRide™ air suspension with adjustable shock absorbers

Front coil spring with shock absorbers
 4.56 rear axle ratio
 Battery control center to control and manage charging of batteries
 Heavy duty chassis/starting battery
 Dual auxiliary house batteries
 130-amp alternator
 Driver and front passenger air bags

OPTIONS

Ford® 6.0L Power Stroke® DI Turbo Diesel V8 engine (235-hp, 440 ft./lbs. of torque @ 2000 RPM)
 Back-up camera
 GPS navigation system
 Heat strip for air-conditioning system
 Fully automatic HWH electro-hydraulic leveling system
 Cobra® CB radio
 Side dinette in lieu of couch on select floorplans
 15,000-BTU roof-mounted Dometic® air conditioning
 Gerard® power awning
 Individual awning for any window
 Outdoor entertainment system
 8-cu.-ft. Dometic® double-door refrigerator/freezer w/ice maker
 10-cu.-ft. Dometic® refrigerator
 Cherry/natural-maple cabinets
 10-disc CD changer
 Heart® interface 2,000-watt power inverter
 Bose® Life Style 18 AM/FM/DVD player and Surroundsound®
 Fantastic® roof vents with automatic rain sensors
 Aluminum-alloy wheels
 DSS satellite TV dish
 Fully automatic digital in-motion satellite system
 Other options are available — contact your ISATA dealer for more information.

WARRANTY

Conversion has a limited warranty for three (3) years or 36,000 miles by Dynamax Corporation.
 Chassis has a three (3) year or 36,000 mile warranty by Ford® Motor Company.
 Installed appliances and fixtures are warranted by their respective manufacturer.
 Ask your dealer to see a copy of the Dynamax warranty for details.

KEY DIMENSIONS

	IE282	IE280	IE254	IE250	IE235	IE230
GVWR:	14,050 lb.	14,050 lb.	14,050 lb.	14,050 lb.	14,050 lb.	14,050 lb.
GCWR:	20,000 lb.	20,000 lb.	20,000 lb.	20,000 lb.	20,000 lb.	20,000 lb.
Overall Length:	28' 9"	28' 9"	25' 11"	25' 11"	24' 6"	23' 11"
Exterior Width:	8' 5"	8' 5"	8' 5"	8' 5"	8' 5"	8' 5"
Wheelbase:	192"	192"	179"	179"	171"	158"
Overall Exterior Height: (includes standard 13,500-BTU roof air conditioner)	10' 1"	10' 1"	10' 1"	10' 1"	10' 1"	10' 1"
Interior Height:	6' 6"	6' 6"	6' 6"	6' 6"	6' 6"	6' 6"
Fuel Capacity:	55 gal.	55 gal.	55 gal.	55 gal.	55 gal.	55 gal.
Water Capacities:						
Fresh	36 gal.	34 gal.	37 gal.	34 gal.	38 gal.	34 gal.
Grey	26 gal.	23 gal.	26 gal.	26 gal.	13 gal.	26 gal.
Black	26 gal.	26 gal.	26 gal.	25 gal.	40 gal.	25 gal.
LPG Capacity:	20.3 gal./92 lb.	12.2 gal./55 lb.	12.2 gal./55 lb.	12.2 gal./55 lb.	20.3 gal./92 lb.	20.3 gal./92 lb.



A manufacturer of luxury touring vehicles

2745 Northland Dr • P.O. Box 1948 • Elkhart IN 46515

888-295-7859

www.dynamaxcorp.com

Actual towing capacity is dependent on your particular loading and towing circumstances, which includes GVWR, GAWR and GCWR, as well as adequate trailer brakes. Please refer to the Owners Manual of your vehicle for further information. Floor plans, features and specifications of the ISATA are subject to change without notice.

02/06/10M

©2006 Dynamax Corp.